



Transport & Infrastructure Committee

24 January 2025

Title:	Local Transport and Connectivity Plan (LTCP) Monitoring and Evaluation update
Report of:	Emma White, Acting Transport Strategy and Policy Manager
Lead Member:	Councillor Anna Smith, Chair of Transport and Infrastructure Committee
Public Report:	Yes
Key Decision:	No
Voting Arrangements:	Recommendation A: No vote required Recommendation B: A simple majority of voting Members Recommendation C: A simple majority of voting Members

Recommendations:

A	Take note and comment on update to Local Transport and Connectivity Plan's monitoring and evaluation
B	Recommend to the Combined Authority Board to approve the updated LTCP Monitoring and Evaluation Key Indicators (as documented and recommended in Appendix A).
C	Recommend delegating authority to the Assistant Director for Transport, in consultation with the Chief Finance Officer and Monitoring Officer, to enter into contracts with delivery bodies for the development of LTCP Monitoring and Evaluation KPIs that will be subsequently tabled at an appropriate Transport and Infrastructure Committee.

Strategic Objective(s):

The proposals within this report of the LTCP fit under the following strategic objective(s):

x	<p>Achieving ambitious skills and employment opportunities</p> <ul style="list-style-type: none"> Bringing together people, employers, providers, and place leaders to guide and drive an integrated approach to skills and employment in our region. Attracting more businesses to grow or relocate to Cambridgeshire and Peterborough. Improved community connection
x	<p>Achieving good growth</p> <ul style="list-style-type: none"> Further development of long-term strategies that integrate our local transport and highway connectivity priorities.
x	<p>Increased connectivity • Digital and physical connection to communities, professional networks, health services, leisure, nature and to places of employment and education. Reducing the need for travel with more services located within communities.</p> <ul style="list-style-type: none"> Deliverables: - Reduced rural isolation - Improved Highway connectivity - Sustainable and reliable public transport. Outcomes - (1) Increasing share of public transport usage and sustainable travel as a proportion of all travel; (2) Reduction in numbers of people killed or seriously injured on region's roads; (3) Reduced congestion on major roads; (4) Measurable improvements in connectivity for 'left behind' areas

x	<p>Enabling resilient communities</p> <ul style="list-style-type: none"> • Providing the infrastructure and support to enable communities across the region to be adaptable to environmental and climate, financial and social crises and be well placed to extend cultural opportunities for Cambridgeshire and Peterborough to be a great place to live and work. • Have the infrastructure – power and water especially - needed to achieve sustainable growth - Reduced accidents on region’s roads. • Deliverables: Environmental and Climate actions - Infrastructure – sufficiency, preservation, and safety. • Outcomes - (1) Reduction in CO₂ emissions for Cambridgeshire and Peterborough; (2) Increase in biodiversity with improvements in both common and red-list species
---	---

1. Purpose

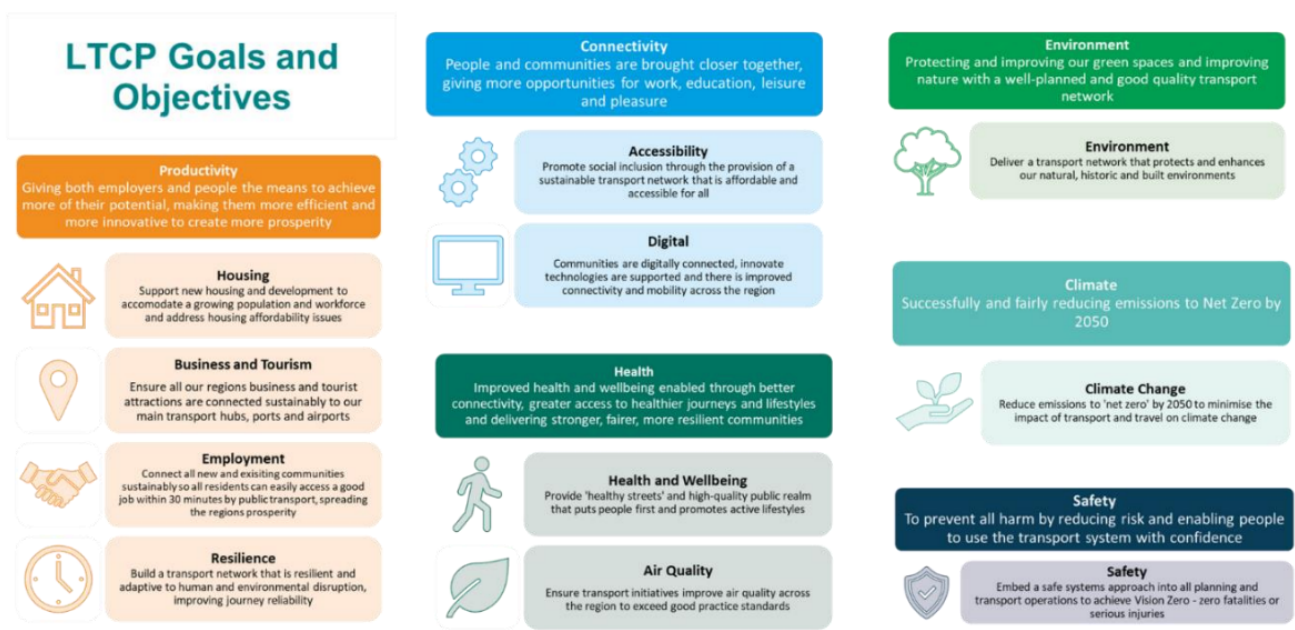
1.1	This paper seeks to provide an update on the Local Transport and Connectivity Plan (LTCP) and the proposed updates to the Monitoring chapter of the LTCP - Page 52-53 LTCP and the 2023 LTCP Monitoring and Evaluation report .
-----	---

2. Proposal

2.1	<p>This paper aims to:</p> <ul style="list-style-type: none"> • Provide an update on the progress of the Local Transport and Connectivity Plan (LTCP); and • Propose key revisions to the previous Monitoring and Evaluation Report and the Monitoring chapter in the LTCP. <p>In addition, the Transport and Infrastructure Committee (TIC) are recommended to the approve the revised Key Performance Indicators (KPIs) for monitoring and evaluation for consideration by the Combined Authority in March 2025. These updated KPIs are designed to effectively track progress and outcomes, ensuring alignment with strategic objectives and enhancing the LTCP’s impact on sustainable transport improvements across the region.</p>
-----	--

3. Background

3.1	<p>In November 2023 the LTCP was approved by the Combined Authority Board. A link to the LTCP is here. The Combined Authority LTCP vision is: “A transport network which secures a future in which the region and its people can thrive”. The CPCA LTCP objectives are shown below:</p>
-----	---



Within the LTCP, the chapter on monitoring the LTCP is located at page 52 here: [CPCA-LTCP-Strategic-Document.pdf](#)

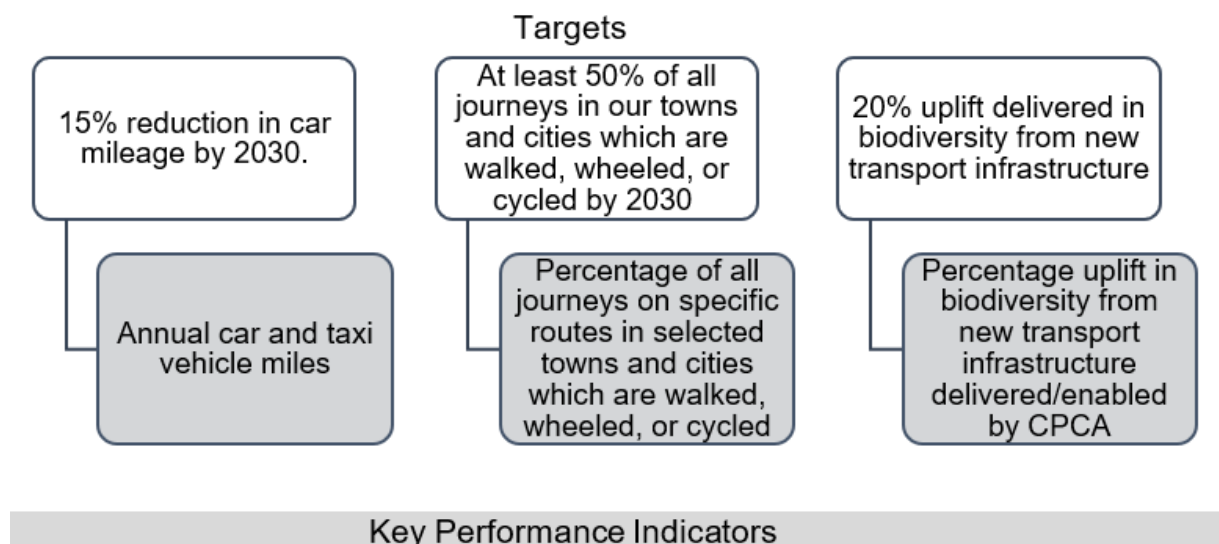
In summary, the chapter states measuring progress relating to the LTCP is essential to ensure the vision is delivered. The Combined Authority intends to report on the progress of this Plan on an annual basis. As part of this, we will publish monitoring reports through our governance processes to highlight progress and areas of concern in the delivery of this Plan's vision, goals, and objectives. This will include progress made against the headline targets and performance against the KPIs.

Our targets and indicators will help to provide more detail and identify potential areas for further work. As part of the review process, we will assess their effectiveness as indicators as we look to identify other potential data and information sources.

3.2 The Combined Authority's Policy, Insight and Performance Team has conducted a comprehensive review of the 37 KPIs in the LTCP. This included assessing data sources identified in the last Monitoring and Evaluation Report and identifying new or improved sources for KPIs with unavailable or unsuitable data. These efforts aim to ensure the monitoring framework is supported by relevant, robust, and up-to-date data, enhancing the quality of insights from evaluations.

The [Performance Management Framework](#), approved by the Combined Authority Board in September 2023, has guided this process. Built on principles of relevance, reliability, clarity, and alignment with Corporate Performance Indicators, the framework ensures data is credible, fit for purpose, and allows benchmarking where possible, such as against national averages.

The review also identified several additional LTCP targets requiring measurement to track performance. Consequently, three new KPIs have been identified and are recommended for inclusion in the *LTCP Monitoring and Evaluation Report for 2024/25*. These align with the LTCP targets and provide a clear framework for progress and outcome reporting.



Appendix A presents a detailed summary of the findings from the KPI review, including recommendations, the rationale behind them, and a Red, Amber, Green (RAG) status assessment for each KPI. The RAG assessment evaluates both the estimated cost of data collection, and the value of the insights gained. This approach ensures that recommendations are grounded in a careful consideration of cost-effectiveness and the utility of the information provided.

The Committee is asked to recommend to the Combined Authority Board to approve the updated LTCP Monitoring and Evaluation Key Indicators documented and recommended in Appendix A. The Board's approval will enable the progression of the LTCP Monitoring and Evaluation Report for 2024/25 and into 2025/26, ensuring the production of an annual report that delivers meaningful and actionable insights for the Committee's decision-making processes.

Summary of recommended changes to KPIs:

- Add three new indicators: Introduce H11, C13, and CE7, reflecting key targets stated in the LTCP.
- Amend seven indicators: Modify C2, C3, C6, C13, H1, H3, and S4 to improve clarity or enable effective data collection.
- Amend three indicators to enable benchmarking: Adjust P2, P3, and P4 to enhance comparability with other areas.

	<ul style="list-style-type: none"> Commission data collection for 10 indicators where there is no existing data available: Initiate procurement for data collection and analysis for C4, C10, P1, CE1, CE2, CE3, H4, H5, H8, and S3 to support monitoring and evaluation efforts. <p>As part of the commissioning stage, procurement will be undertaken to assess the costs of further data collection and analysis, which are currently unknown. Once costs are established, the Combined Authority will decide whether to proceed with the work or, if necessary, return to the Committee with alternative proposals for consideration.</p> <p>Approval of these recommendations is critical to advancing the LTCP's monitoring and evaluation framework and ensuring the availability of high-quality, actionable insights for ongoing decision-making.</p>
3.3	<p>Next steps</p> <p>Following approval of the outlined recommendations by the Combined Authority Board, work will begin on the Monitoring and Evaluation Report for 2024/25, with preparation scheduled for early 2025 and the final report expected in Summer 2025.</p> <p>For measures requiring commissioned data collection and analysis, results may not be available for inclusion in this report due to the time needed for procurement and data collection during optimal periods (e.g., accounting for seasonality). To streamline this process, related indicators will be grouped by data collection method. For example, a single survey will gather insights for indicators C4, C10, CE1, CE2, CE3, and S3, while sensors will be installed to collect data for H4, H5, H8, and P1.</p> <p>These coordinated efforts will ensure that the data is robust, strategically collected, and reflective of the key performance measures outlined in the LTCP.</p>
3.4	Where possible, reported data will be presented as timeseries to show performance against baseline.

4. Appendices

4.1	Appendix A – LTCP KPI Review Table
-----	------------------------------------

5. Implications

Financial Implications

5.1	As noted in the report above as part of the commissioning stage, procurement will be undertaken to assess the costs of further data collection and analysis, which are currently unknown. Once costs are established, the Combined Authority will decide whether to proceed with the work or, if necessary, return to the Committee with alternative proposals for consideration.
-----	---

Legal Implications

6.1	<p>A standard CPCA contract will be issued following the successful procurement exercise.</p> <p>As per Chapter 4, para 4.3.2 of the Combined Authority's Constitution, "the adoption of, and any amendment to or withdrawal of any major strategy or policy including the Mayor's growth ambition statement, Corporate Plan, Local Industrial Strategy, Local Transport Connectivity Plan, Skills Strategy and others", is reserved to the Combined Authority Board.</p>
-----	---

Public Health Implications

7.1	<p>The recommendations in this report have significant positive implications for public health. A key objective of the LTCP is to enhance health and well-being by improving connectivity, expanding access to healthier travel options, and promoting lifestyles that support physical and mental well-being.</p> <p>By improving infrastructure and ensuring equitable access to these health-promoting transport options, we aim to create environments where individuals are empowered to make healthier choices, leading to long-term improvements in community health outcomes. Monitoring the success of these initiatives will be crucial to understanding their impact and making adjustments as needed to further support health and well-being across the region.</p>
-----	--

Environmental & Climate Change Implications

8.1 The recommendations in this report have significant positive implications for the environment and climate change. Central to achieving the LTCP's environmental goals is the need for robust monitoring and evaluation. To effectively track progress and ensure that interventions are making a tangible impact, it is essential that comprehensive data is collected and assessed on emissions, air quality, and the environmental benefits of active travel initiatives. This monitoring will enable us to evaluate the effectiveness of transport strategies in reducing carbon footprints, while also identifying opportunities for further improvement. By establishing clear and consistent metrics, the Combined Authority can ensure that the LTCP's environmental goals are being met and adjust strategies where necessary to maximise the positive impact on the climate and the natural environment.

Other Significant Implications

9.1 None.

Background Papers

10.1 [Transport and Infrastructure Committee 4th Nov 2023](#)